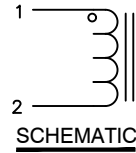
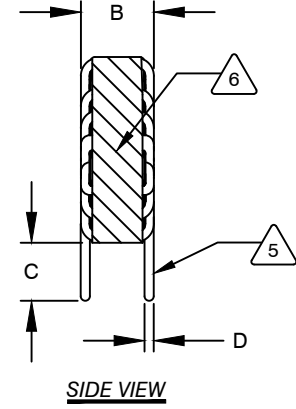
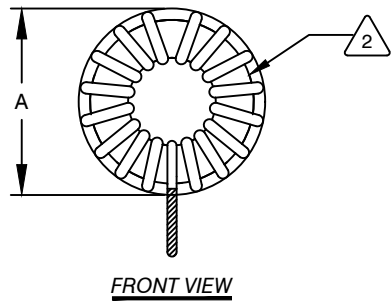


The information contained in this drawing is the sole property of CWS Coil Winding Specialist.  
Any reproduction in part or whole without written permission of CWS Coil Winding Specialist is prohibited.

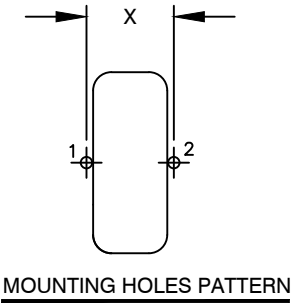


DIMENSIONAL TOLERANCES INCHES [MM]				
A MAX	B MAX	C MIN	D REF	X REF
0.53 [13.46]	0.30 [7.62]	0.50 [12.70]	0.03 [0.64]	0.28 [7.11]

REVISION HISTORY						
REV	ECN	DESCRIPTION	SIGN & DATE			
			BY	DATE	CHK	DATE
A	—	PRODUCTION RELEASE	JL	08/10/17	JLAU	08/10/17
B	—	UPDATED SPEC.	TN	08/01/2020	JL	08/01/2020



DC BIAS (AMP)	L@ 1KHz (REF)
0	57uH
1.0	52uH
2.0	42uH
3.0	32uH



- 7 BUILD TO RoHS COMPLIANCE AND LEAD FREE.  
USING A PERMANENT MARKING METHOD  
MARK PART NUMBER, REVISION AND DATE CODE
- 6 WRAP INDUCTOR WITH 3M # 79 OR EQUAL  
(I.E. COIL MUST REST FLAT ON PCB). LEADS MUST BE TANGENT TO THE CORE  
REMOVE INSULATION AND TIN LEADS 0.5 INCH, FLUSH WITH THE COIL EDGE
- 5 WIND COILS EVENLY SPACED AROUND THE CORE
- 4 CONSTRUCTION:  
THESE SPECIFICATIONS ARE BASED ON LOW RIPPLE CURRENT  
WEIGHT: 3 GRAMS TYPICAL  
INTERWINDING CAPACITANCE = 6.15pF TYP @ SRF  
SRF = 8.34 MHz TYPICAL  
|Z| = 3 KILO-OHMS TYP @ SRF  
RECOMMENDED AMBIENT OPERATING TEMP: -40°C TO 155°C  
HI-POT TEST FOR WINDING TO CORE ISOLATION = 500VDC MIN.  
INDUCTOR CURRENT RATING : 3.0 AMPS, 20°C TEMP. RISE WITH SOME AIR FLOW  
DCR = 30.0 MILLI-OHMS MAX.  
INDUCTOR DC BIAS: SEE TABLE ON THE RIGHT  
INDUCTANCE = 60uH±15% @ 0 AMP DC BIAS, 1.0 KHz, 250mV
- 3 SPECIFICATIONS: @ 25°C:  
WIRE: UL RECOGNIZED 200°C RATED MAGNET WIRE  
CORE: POWDERED TOROIDAL CORE, CWS BYTEMARK OR OTHER APPROVED PART
- 1 MATERIAL: UL RECOGNIZED 94V-0 FOR FLAMMABILITY, RATING CLASS B (130°C MIN.) REQUIRED  
ANY TOLERANCE. THIS DIM. CAN VARY A LITTLE FROM PART TO PART.  
"TYP" IN DIM. TOL. TABLE REFERS TO A NON-CRITICAL TYPICAL (AVERAGE) DIM. WITHOUT  
NOTES: UNLESS OTHERWISE STATED, READ NOTES FROM BOTTOM UP.  
CAGE CODE: 5DME2

CODE IDENT	MFG. P/N	DESCRIPTION	ITEM NO.	
<b>PARTS LIST</b>				
AUTOCAD	X	<b>COILWS COM, INC</b> www.coilws.com	CWS Coil Winding Specialist. 353 W. Grove Ave. Orange, CA 92865	
SOLIDWORKS				
SIGN	DATE	<b>TITLE:</b> <b>TOROIDAL POWER INDUCTOR</b> <b>60uH, 3.0 Amps, Vertical</b>		
DRAWN	TDK 08/10/17			
CHECKED	JLAU 08/10/17			
ENGR.	KSUM 08/10/17			
APPR.	JLAU 08/10/17	SIZE	DWG. NO.	REV
		B	HF112-600M-3.0AV	B
		SCALE	SHEET 1 OF 1	
		2=1		

UNLESS OTHERWISE SPECIFIED  
 DIMENSIONING AND TOLERANCE PER ANSI Y14.5M  
 ALL DIMENSIONS ARE IN INCHES AND [MILLIMETERS].  
 TOLERANCE INCHES:  
 .XXX=±.005 .XX=±.015 <math>\angle = \pm 0^{\circ}30'</math>  
 TOLERANCE METRICS:  
 .XXX=±.127 .XX=±.38 <math>\angle = \pm 0^{\circ}30'</math>  
 ANGLE PROJECTION   
 DO NOT SCALE DRAWING